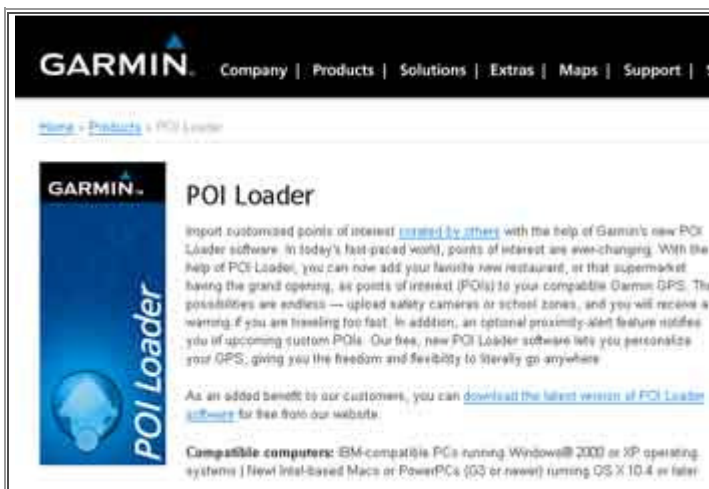


Use Garmin's POI Loader Software to Update or Add Custom POI's to Your GPS Sat Nav

Please note that you carry this installation at your own risk. The NDA do not accept any responsibility for any damage or loss of information caused in these procedures.

You will need a mini usb lead to connect your Garmin to your PC if you haven't got one already. I use my digital camera one, but you may need to try a few as I've received email from users who've had incompatible usb leads. (Never happened to me though.)

Warning: Using POI loader could delete any Custom POI's on your device. You are always recommended to [back up your device](#) before continuing.



First head on over to the [Garmin POI Loader home page](#) and read all about the software, what it can do and which GPS Sat Nav's and operating systems it's compatible with.



Now we need to start [downloading it from this page](#). Make sure you click the right link - don't download POI Loader for a Mac (unless you've got one!)

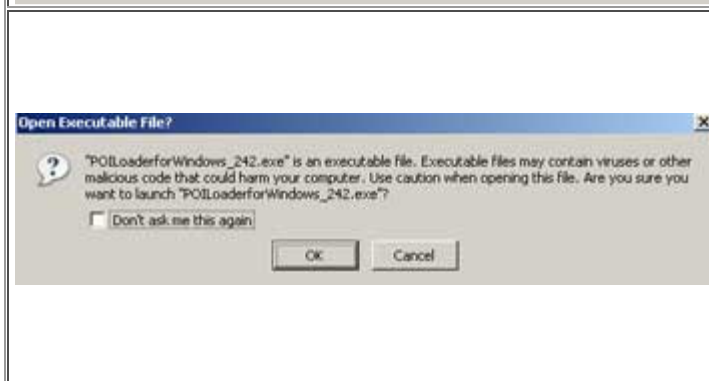


You'll now be sent to the page on the left.

Click on the download link to get started.



You may be faced with this dialogue box, just click "Save File"



After the software has downloaded and you try to run it, you may get this warning box.

Click "ok".

POI Loader will now install on your home PC.



After installation, POI Loader should run.

If it doesn't, it can be found if you click your PC's "Start" button, then "All Programs". "Garmin", "POI Loader"

Plug your GPS Sat Nav into your mini usb lead, you may need to enter your PIN code

You should now see the screen on the left. If you're device isn't listed, make sure its plugged in and on, then click "Find Device".

Click on the "help" button and read the instructions, its not long and will help you understand what the software is capable of.

Click next.



Now you should see this screen, in this exercise we want to install new custom POI's so we select the top option then click next,

Now we're faced with this screen. Make sure you change the units box to your preference.

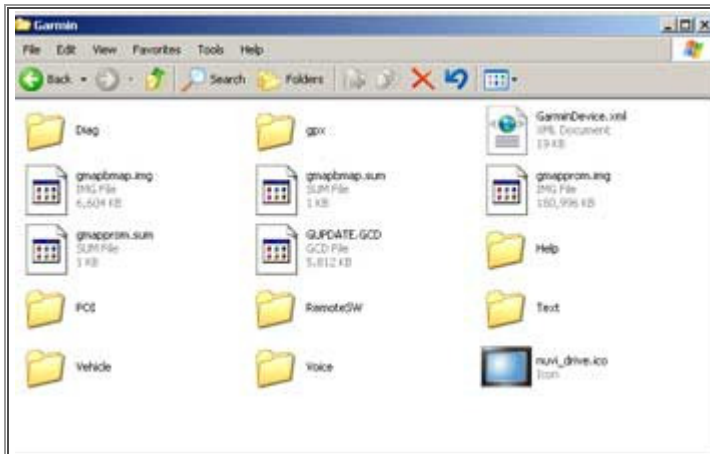
We've also got to choose express or manual install, express in recommended for most users, but with manual you can edit the proximity warning settings for your POI's (eg if you wanted to have warnings about schools, etc).

We'll be using manual mode.

STOP! Before we go any further we're going to check our Garmin's POI folder and copy the stuff out of it and onto our PC.

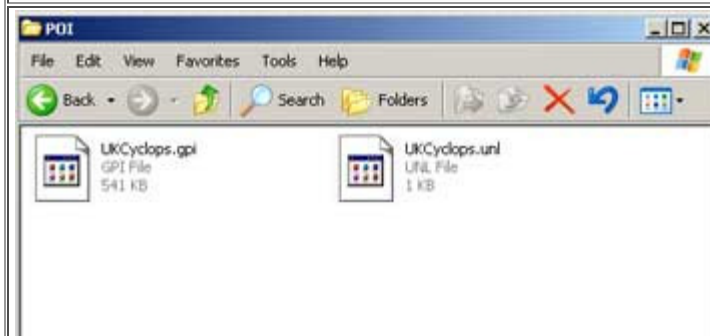


Any custom POI's you've installed - eg speed camera's - will be deleted when we install our new POI's.

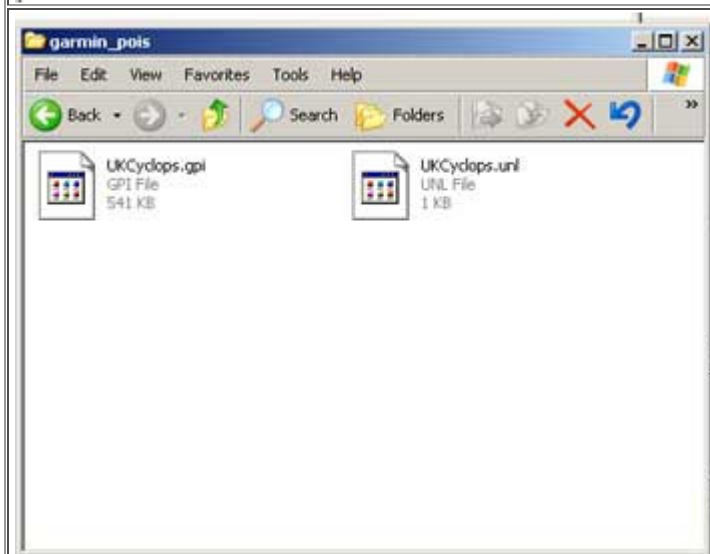


To get into your Nuvi, on your Desktop click "Start", "My Computer", then on the Garmin, then click the "Garmin" folder and you should see something like the screen on the left.

Double click the POI folder.

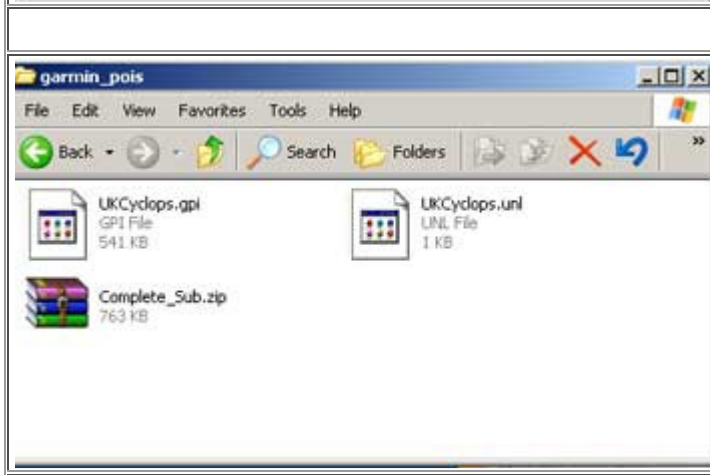


As you can see I've got the Garmin Cyclops Speed Camera POI's installed, so I'm going to control-click both files and "copy".



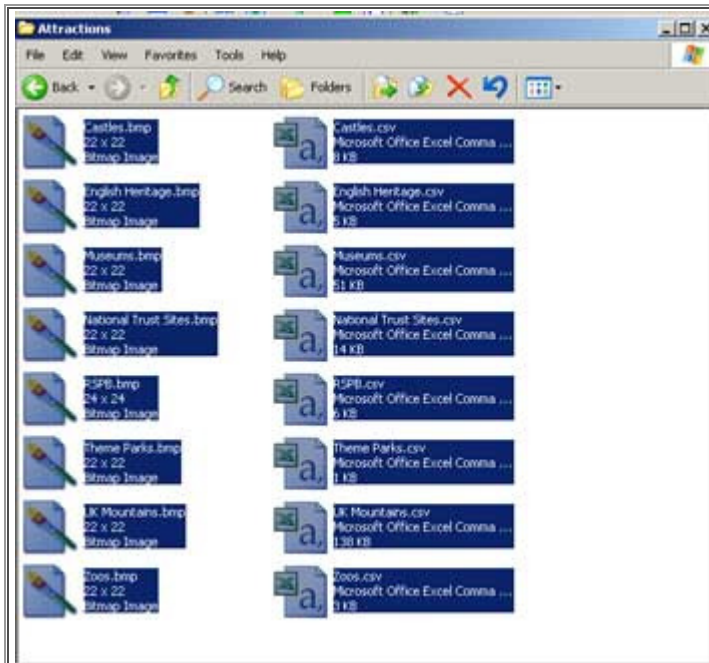
I've created a new folder in "my documents" on my desktop pc, called "Garmin POI's" and I've copied my speed camera POI's to that folder.

Once we've downloaded some custom POI's we'll be putting them here too - so when we activate POI loader it will transfer everything back to our Garmin.

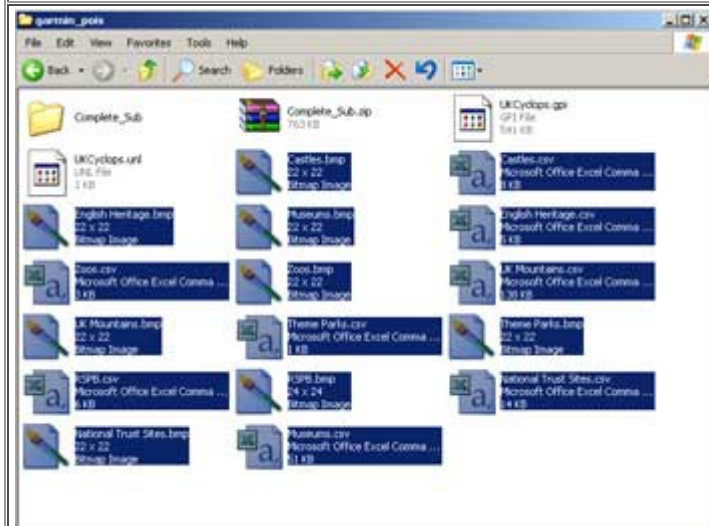


Go to your download NDA POI's and 'unzip' them to a directory, if you haven't done that already.

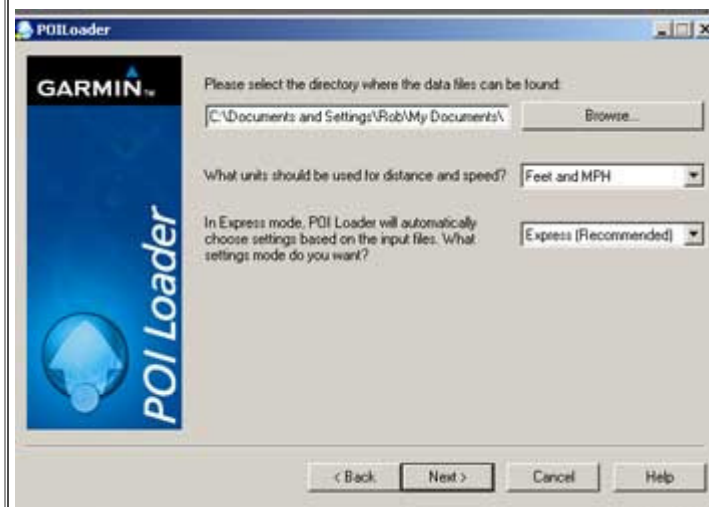
Another folder should appear, so go and have a look at what you've got.



Click on the new unzipped folder and highlight the two files and copy them



Now we go back to our POI folder ("up", "up") and paste our poi's into place. (The one with your cameras if you are reinstalling them)



Now if we get POI Loader back up, we can browse to our POI folder, select it, then "Next"

and we're done!

Unplug your Garmin and have a look at the new POI's.

It's a bit long winded, but once you've installed custom POI's once it easier the next time - just remember that POI loader deletes your old custom POI's!